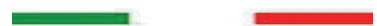




Innovative
medical solutions



mesotech

Sterile Meso-cocktails

For several indications with exclusive and pharmaceutical grade formulas



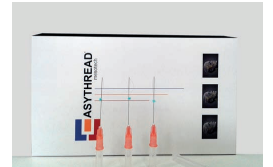
Needles (MD)

Flexible cannula needles, blunt tip and side hole.
Hypodermic Needles for mesotherapy



Easy Thread

Lifting effect and collagen proliferation (Easy Thread)



EasyPRP

Growth Factors and CellRegeneration (EasyPRP)



Chelaskin (Patented)

Ointment to stop the flush post-treatment



Overplast

Compressive garments post plastic surgery



Leadergun (MD)

Fully automatic mesogun
with several doses with different treatments



Motion Roller

Last generation skin roller (Patented)



Needle Roll Handle

Handle for skin needling,
with swivel head and ergonomic



Supplements

To prevent hair loss (HS tablets)

To enhance a strong action on weight loss (Celludren and Idealweight)



Anedol

Desensitizing for topical use





12 Sterile Meso-cocktails
for several indications with exclusive formula

Each mesococktail always contains:
Impact ingredient - to obtain immediate result (and so satisfy patient's expectation)
Anti-oxydant ingredient - to balance free radicals' level (FRs increase after every dermathologic treatment).
Synergy - real and focused to prevent and cure the beauty flaw.

Mesotech only manufactures sterile mesococktails, we don't believe in the single ingredient.

Limits:

Once you open it the first time, the product is exposed to external agents, it means that we have No more sterile product.
Since it's exposed to light and heat, there's a HIGH risk to oxydate.
It has to be combined to other ingredients in exact percentages, so HUGE waste of time.
It has to be bought in big quantities, so GREAT waste of money.

Lack of synergy

A lot of Lab studies are made on ECCIPIENTS, infact, they contribute to the CHEMICAL BALANCE and CHEMICAL LINK of the INGREDIENTS. Without Eccipients or with an inadequate use of them, it will never be possible any synergy, and this means: low effectiveness of the treatment.

No waste of product - the product is in single use vials or ampoules.

Sterility Guaranteed

No time waste - the product is ready to use!

No Risk of Oxydize

High Concentration - to avoid body habit



ISO9001

is basic quality assurance system in Mesotech srl.

This system covers all production steps including design and service process, also can provide good controlled productions for customers and patients We develop our Range in a continuous dialogue with our customers.

ISO13485

quality standard is including ISO9001, traceability, cleanroom, facilities and sterilization for medical device. This standard has been adopted for the production line in Mesotech srl.

93/42/EEC(MDD)

Medical devices directive is special guideline for each medical device to assure safety and comfort to the patients. This directive is adopted in Mesotech srl.

PROCEDURE FOR PRODUCTION

All raw materials are selected by us to meet the characters of medical devices. The production process is controlled according to ISO9001, ISO13485 quality systems. After production, all products are tested and inspected including packaging, sterilization etc.

BIOACT

rebuilding the skin

BIOLIFT

anti-flaccidity treatment

BIOSTRETCH

stimulates wound healing and tissue regeneration

CELLUPHASE

the ultimate meso-cocktail to sculpt face

ELASTHASE

DMAE, elastin, organic silicon to restore the skin

HYDRALIFT

immediate facial firming

BIOAGE

dna main component for your beauty

BIOLISI

strong lipolysis

BOTOPHASE

peptides formula for result simil botulinum

EASYCELL

strong formula: four actions vs cellulite

HAIR SYSTEM

eight actions to redensify

SKINESSE

visible result from the first session

FIELD OF COVERAGE	INDICATION	BRAND
Anti-Aging	Chrono Aging Photoaging	Biolift – Elasthase - Bioage*
Liposculture	Lipolisis Cellulite (PEFS)	Bioline Easycell – Celluphase**
Stretch Marks	Fractured / Broken Connective Tissue	Biostretch – Elasthase***
Hyperpigmentation	Dyschromias Sun Spot Age Spot	Skinesse
Hair Loss	Alopecia	Hair System

*BioAge, indicated also for maintenance therapy after BioStretch or Elasthase

**Celluphase, indicated also for fac-lipo (double chin, eyelids and bags).

***Elasthase, indicated also for neck and décolleté.

Active	Indications	Brand	Frequency
HA (Hyaluronic Acid)	Anti-aging	<i>Bioact*</i> (Photoaging), <i>Hydralift*</i> (Photoaging)	Once every 7-10days
Elastin	Anti-aging	<i>Elasthase*</i> (Neck and décollete and s-marks)	Once every 7-10days
Collagen	Stretch-marks	<i>BioStretch*</i>	Once every 7-10days
DNA	Anti-aging	<i>Bioage</i> (Chronoaging)	Once every 17-10days
DMAE	Anti-aging	<i>Biolift**</i> (Chronoaging), <i>Hydralift*</i> (Photoaging), <i>Elasthase*</i>	Once every 7-10days
PPC+L-Carnitine	Lipolisis	<i>Bioline*</i>	Once every 15days
Caffein, L-Carnitine, Coumarin, Rutin, Hamamelis	Cellulite	<i>Easycell/****</i> (Body-lipo), <i>Celluphase****</i> (Face-lipo)	Once every 7-10days
Saw Palmetto, Biotin, Phantanol, Keratin, Vit.B	Hair loss	<i>Hair System*</i>	Once every 7-10days
Kudzu, Albatin, Glutathione, Pueraria	Iperpigmentations	<i>Skinesse</i>	Once every 7-10days

*mix in 1:1 proportion with sterile water solution , **mix 1ml of Activator with 2ml Base Solution, ***mix in 1:3 proportion with a sterile water solution, ****mix 1ml of Activator with 4ml of Base Solution



Chrono Aging



Elasthase

Actives Elastin, DMAE, Organic Silicon

Dose 2-3.0 mL

Dilution Proportion 1:1

Treated areas Neck and Décolleté

Frequency once each 7-10 days

Sessions 8

Results increase skin elasticity and lifting



Biolift

Actives DMAE, Amino, Organic Silicon

Dose 3mL

Dilution 2mL B-Solution+1mL Activator

Treated areas Malar Zone

Frequency once each 7days

Results increase skin tone and lifting



Bioage

Actives DNA, Vit. E

Dose 2-3.0 mL

Dilution Proportion 1:1

Treated areas Cheek

Frequency once each 7 days

Results restructure skin texture



Photo Aging



Bioact

Actives HA, Retinol, Complex B

Dose 4mL

Dilution Proportion 1:1

Treated areas Cheek, Lip zone

Frequency once each 10 days

Sessions 6

Results moisturizing effect and tone



Hydralift

Actives HA, DMAE

Dose 4mL

Dilution Proportion 1:1

Treated areas Malar area, Front

Frequency once each 15 days

Sessions 5

Results hydration and lifting effect



Cellulite (P.E.F.S.)



EasyCell

Actives Hamamelis, Coumarin, Rutin, Caffeine, Carnitine, Taurine, Cynara, Resveratrol, Organic Silicon

Dose 10mL

Dilution Proportion 1:4

Treated areas abdomen, hips

Frequency once each 7 days

Sessions 7 - 10

Results reduction of cellulite (PEFS)



Liposuction



Biolisi

Actives PPC, Sodium DX, L-Carnitine

Dose 10mL

Dilution Proportion 1:1

Treated areas abdomen, hips

Frequency once each 15 days

Sessions 4 - 6

Results fat reduction through lipolysis



THE ULTIMATE MESO-COCKTAIL TO SCULPT FACE

Face Liposuction

Box contains

- n. 20 ampoules of CelluPhase Base Solution of 2.0mL e.a.
- n. 2 vials of CelluPhase Activator of 5.0mL e.a.

Celluphase is a meso-cocktail whose formula has been based on the basic premise of understanding correctly the face's localized adiposity and "orange peel" problems. Facial adiposity is a process where multiple factors intervene which are statistically associated with its presence and predispose towards its appearance: endocrine, enzymatic, psychosomatic, genetic, dietetic, mechanical and vascular.

Results

Contains five individually clinically proven actives at increased concentrations, where other treatments only contain one;

Remodels and re-firms face;

Accelerates natural subcutaneous fat diminishment mechanisms;

Smooths and tightens the skin;

Reduces the 'orange peel' effect by improving microcirculation;

Celluphase has a Firming Effect on the skin, which when measured by ballistometry, showed a 9.5% decrease in indentation in the skin and a 27.5% decrease in skin flaccidity reduces Double Chin by up to 80%.



Celluphase

Actives Base Solution - Hippocastanum, Fumaria, Nicotin Activator - Hamamelis, caffen, l-carnitin

Dose 2.5 - 5.0mL

Dilution 1m Activator : 4mL Base Solution

Treated areas double chin, eyelids, bags, cheek

Frequency once each 10 days

Sessions 6 - 8

Results deflating action and fat reduction





Reconstruction of cutaneous architecture

BioStretch contains several active ingredients clinically proven to help prevent and repair stretch marks increasing collagen and elastin formation, firming the collagen matrix and rehydrating targeted areas with undetectable molecular hydrating fill.

Collagen is a protein present in our body in more than 25% concentration. Collagenase activity on denatured collagen

Peptide activity on increase of biosynthesis of collagen and elastin

Provides a structural support network of fibronectin

Hydrolyzed collagen, HCP, is collagen that has been enzymatically or chemically processed to make it more easily absorbed by the body.

Hydrolyzed collagen consists of water-soluble peptides which are rich sources of the amino acids glycine, L-proline and L-hydroxyproline.

Results: stimulates wound healing and tissue restauration by collagen matrix regeneration.

It leads to more regular tissue renewal, normal appearance of scars, to full restauration of elasticity.



BioStretch

Actives Collagen, Marin Plasma, Silicium

Dose 0.3 - 0.5mL for each stretch mark

Dilution Proportion 1:1

Treated areas Stretch mark

Frequency once each 10 days

Sessions 10

Results reduction of dyschromy and width of the stretch mark



Redensifies

8

actions

- Restore the microcirculation
- Act in alfa5 reductase process
- Adjust sebum production
- Provide the essential nourishment to the hair bulb
- Thicken hair cuticle
- Restructure the hair cuticle
- Redensify the medulla
- Restore radiance of the foliage

HairSystem

Actives Saw Palmetto, Centella, Biotin, Panthenol, Cystein, Taurin

Dose 5mL

Dilution Proportion 1:1

Treated areas Scalp

Frequency once each 7 - 10 days

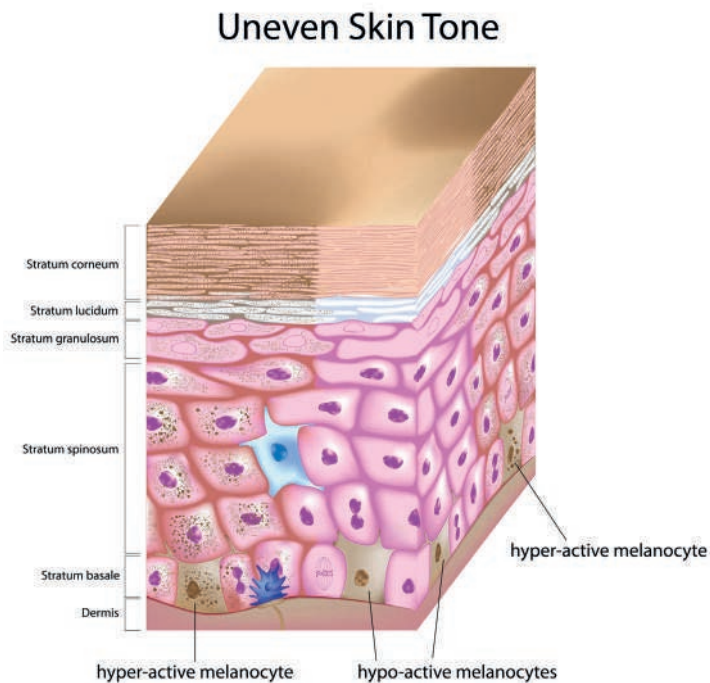
Sessions 10

Results stimulates hair growth, protects hair structure & integrity stretch mark



Skinessse

The first meso-whitening effect



Actives Kudzu, Pueraria, Albatin, Glutathione

Dose 0.3 - 0.5 mL

Dilution Proportion 1:1

Treated areas for each spot - Ø 1cm

Frequency once each 7 days

Sessions 4 - 6

Results reduction and/or fading of spots

Skinessse is the most effective and innovative sterile meso-cocktails for hyperpigmentations, melasma, sun damage, age spots, dyschromias, acne scars. Skinessse contains a complete formula thanks to its active ingredients that work in synergy.

Skinessse's action is fast and visible from the first session.

w

SKINESSE contains natural ingredients, based on Kudzu root nodules (symbiozomes).

Similar structure to Hemoglobin in humans: acts as detoxifier of free radicals skin lightener active. Adjusts the activity of tyrosinase.

and helps to control melanogenesis through scavenging of nitrogen oxide (NO) radicals.

Additional activities

It also improves skin elasticity, stimulates production of collagen Curative action in Hyperpigmentation and tanned skins

It also contains Isoflavones Pueraria, antioxidant properties. It is not cytotoxic and is very stable in water solutions

How it works?

Step 1: Reduces NO (melanogenic mediator) production

Step 2: Inhibits Tyrosinase and other enzymes as TRP-1

Step 3: Controls Melanosome transfer

Additional activities:

Antioxidant, protection against UVA/ UVB, inflammation inhibitor, improves cell metabolism, protection of dermal matrix fibres.

Reduces the melanin quantity and also inhibits melanocytes dendricity, making difficult the melanosome trasfer to keratinocytes, in just 10 days.

Albatin

It is a Phosphinic analogue of Alanine (Ala-P)

It is not cytotoxic and very stable in water solutions How it works?

Albatin stabilizes DOPochrome and inhibits the enzymatic activity of the DOPochrome tautomerase (TRP-2).

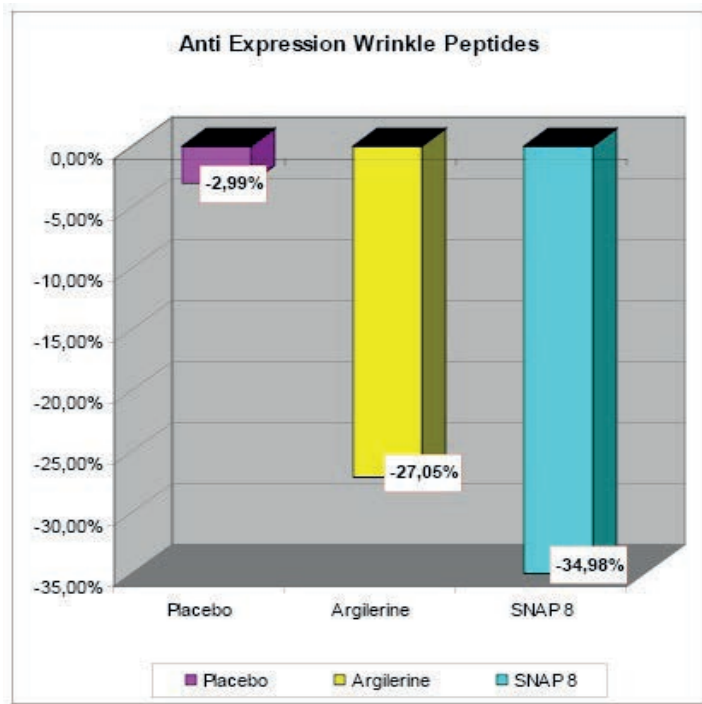
Glutathione

Mechanism of action: it reduces the intermediates of the melanin. Glutathione has a reducing group (SH) which can form a complex with copper and also reduces dopaquinone to DOPA.

Botophase

Botox-like effect

Botophase is a restructuring and firming facial treatment designed to act from the deep skin stratum in order to recover the good appearance of the skin. The unique combination of mimetic peptides such as: Argireline, SNAP-8 and Leuphasyl and other ingredients like Hyaluronic Acid and Retinol, has a specific effect smoothing the fine lines, as well as, it helps the skin to have a smoother, better, and more elastic skin look.



The formula includes active ingredients of tested efficacy, all of them act together over the main causes of the first signs of aging. Botophase has a similar effect to botulinum (without any side effects), which is the relax of facial muscles and fibroblasts alongside the filling, anti-oxidating and nourishing effects the other ingredients provided.

Regulating the muscular tone, inhibiting the neuron acting over the nerve is a key factor to achieve the smoothing effect of the skin: The muscles contract once received a neurotransmitter transported inside a vesicle. The protein complex SNARE (SNAP Receptor) is essential for the neurotransmitter's release during the synapse.

This complex is composed by 3 structures: VAMP, Syntaxin & SNAP 25. The union of the vesicle and the complex is needed to merge it with the neuron membrane and then releases the neurotransmitter acetylcholine.

The inhibition of the SNARE complex causes the muscular relax, but this time the mimetic peptides just lightly destabilizes the complex acting over the SNAP 25 protein, instead the irreversible way botulinum works destroying it. This way the synaptic vesicles can not anchor and release acetylcholine in an efficient way, which allows a certain neurotransmission while a muscular relax.

As a result, the muscular contraction is smoothed preventing the appearance of wrinkles.



Actives Argireline, Avena Sativa, HA, Retinol

Dose 2 - 4 mL

Dilution Proportion 1:1

Treated areas periocular and malar areas; smoker lines

Frequency once each 7 days

Sessions 4 - 6

Results 63% less wrinkle depth, visible improvement of the skin



Leadergun

Fully automatic meso-gun

The only one with anti-leakage system and several doses for each different treatment [CE0476]. It was designed to overpass the limits of all other mesoguns:

Injection

a single injection (spot)
burst injection (very fast, 3 injections per second) continuous injection (no stop)

Dosage

pico dose (0.007 -> 0.05) micro doses (0.013 -> 0.10) macro doses (0.025 -> 0.15)
Penetration / depth: from 1mm to 13mm Syringe seat - (mL): 1; 2.5; 5; 10 Needles: 4mm; 6mm; 13mm.

SMT – Step Motor Technology

Extreme precision during the injection and the output of the product and during the extraction of the needle from the skin. Thanks to these features SMT is also used on medical devices in Oncology and Intensive Therapy.

Automatic functions

Automatic turn off of device after few minutes without manual use.
Automatic adjustment of penetration depth.
Automatic detection of the empty syringe and recalling.

Programming

Syringe size
Needle size
Penetration depth
Injected dose (Pico, Micro, Macro) Injection mode
Injection frequency
Permanence of the needle into the skin

Leadergun has logical memory! The integrated software is designed to avoid any risk of error by the operator.

LCD Colour Screen 1,5”
Brightness and Contrast’ s Adjustment

Syringe Cover

To avoid eventual touch of the syringe during the treatment.

The cover and the backside of Leadergun have a magnet on its top, which allow the cover’s blockage if it’s turned upside down during treatment.

(According to MD Certificates’ Safety Regulations.)



Five preset programs

Grow (anti-aging)
Lipo (cellulite)
Stretch (stretch-marks)
PRP
Botulinum

Handle Design

Leadergun’s handle has been designed to fit all ergonomics standars. The special TPE material which wraps the handle, allows a perfect grip and a better handling during the treatment.

Ergonomics

All the components in Leadergun are equally balanced and respond to Ergonomics MSI Requirements

Battery

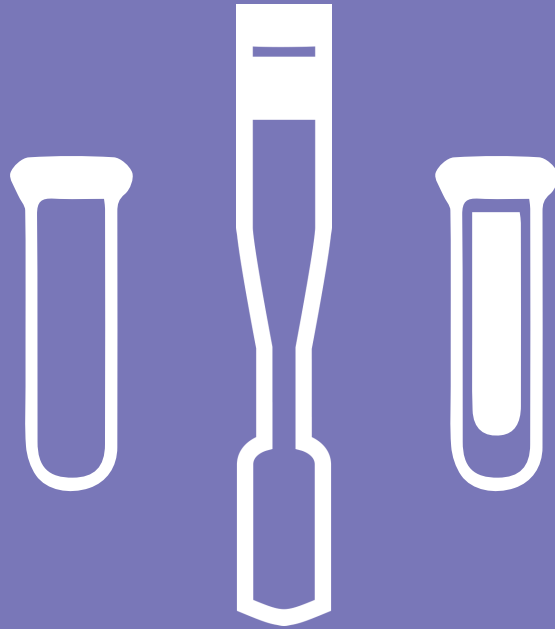
Lithium Ion 2200 mAh 7,4 V Autonomy : 36 hours
Charge time : 2 hours Max
Battery level of charge on LCD Screen

Power supply

Universal AC input/ Full range, INPUT: 100 – 240 VAC - 50/60 Mz - 0,8 A



Available in black or white version
Smart color LCD display



The ultimate tube
Specific kit for a quality PRP,
without gel separator

EasyPRP

Enriched Test Results

Platelets Count is the key for Effectiveness

Quick and simple procedure in just 5 minutes!

Chemical Additives FREE

Buffy Coat concentration 2,000,000 in 1ml with only 11cc of blood. Eclectic 'V' shape to fit all types of centrifuge.





Y Shape
Clear separation of Plasma, RBC, and PLT through the scientific Y-shape design.



Slim Neck
Accurate extraction of buffy coat with the slim and transparent neck.



Control Lever
Free control of RBC level with the control lever.



Versatile Size
Suitable size for all types of centrifugal machines. (Swing and Angle type)

Faster and more simple than other Kit for separation and concentration of blood and Buffy Coat and Plasma
Short downtime, strong efficacy and longlasting effect...PROVEN RESULTS!

Growth Factor

TGF-β
(Transforming growth factor beta)

Function

Stimulation Blast mesenchymal Cell to be differentiated
Cell division Control of microvascular endothelial cells, fibroblast, osteoblast.
Control of Synthesis and enzymes secretion of Collagen
Control of Cell division with other GF
Stimulation of Chemotaxis of mesenchymal Cell and creation of new blood vessel

TGF-β
(Transforming growth factor beta)

Secretion control of collagen synthetase and control of collagen composition Cloning of stem cell

EGF
(Epidermal growth factor)

Control of enzyme secretion of collagen composition, cell division of an epithelial cell, intermediate lobe cell

VEGF
(Vascular endothelial growth factor)

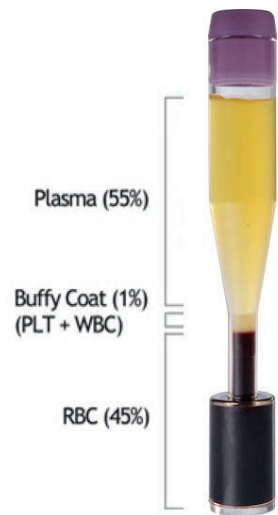
Increase of blood vessel creation and transmittancy cell division stimulation of endodermal cell

CTGF
(Connective Tissue Growth Factor)

Creation of blood vessel, Joint regeneration, Fibroplasia, Stimulation of platelet coagulation

IGF
(Insulin-like growth factor)

Stimulation of Intermediate lobe stem cell division, Joint regeneration



Each kit of EasyPRP contains

- 1 PRP device
- 1 butterfly needle (size 21G),
- 2 sharp needles (size 18G-90mm)
- 1 ampoule of anticoagulant (2mL) sodium citrate 3.8%

Indicated for

Orthopedy, Cardiology, Trichology, Ophtamology, Plastic Surgery, Dermatology,



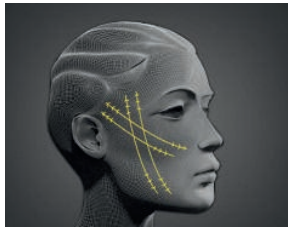


PDO Thread

Monofilament and 3D COG

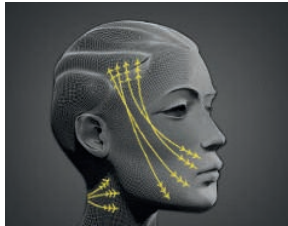
EasyThread

PDO threads

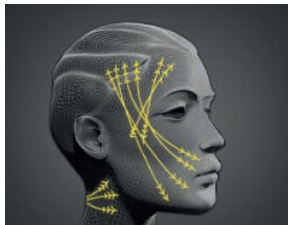


Easy Thread is a premium lifting thread made in PDO (Polydioxanone) which is absorbed after proliferating collagen by fibroblasts stimulation.

Any of you can experience overall face contouring and skin elasticity. It brings Natural and remarkable effect to face and body after simple and safe treatment. The superior quality of the Ultra Thin Wall needle allows the treatment to be easy and painless.



Threads in tissues decompose by hydrolysis to water and carbon dioxide and after 2-3 month remain to 50 % of strength properties. After 6-8 month they completely resolve. The reaction of tissue on threads consists in soft neocollagen- nesis (the forming of young collagen), which continues carry out “frameworkwork” function over a period of 18-24 months.



Synthetic polyester fiber Polydioxanone Monofilament absorbable by hydrolysis
 Excellent biological tolerability
 Widespread use in the general and specialized surgery Start time of resorption after 10-15days Complete resorption after 90-180 days

Indications

- Contouring - Full Face, Breast, Hip, Upper Arm
- Wrinkle - Face, Neck, Hand, Indian Groove, Marionnett folds, Nasolobia fold, Crows feet, Glabella Fold
- Volume reduction - Double chin, Zygoma, Arm, Abdomen autoimmune diseases

Skin Rejuvenation Effects

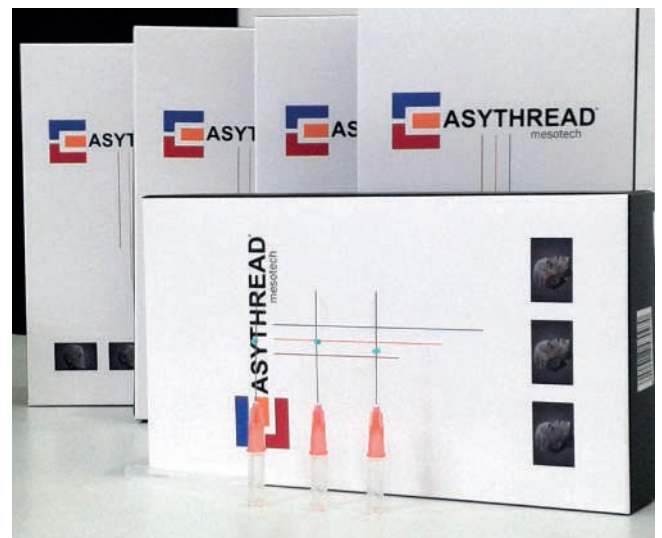
- Stimulation of Collagen Production
- Promotion of Local blood Microcirculation
- Activation of Reparative Processes

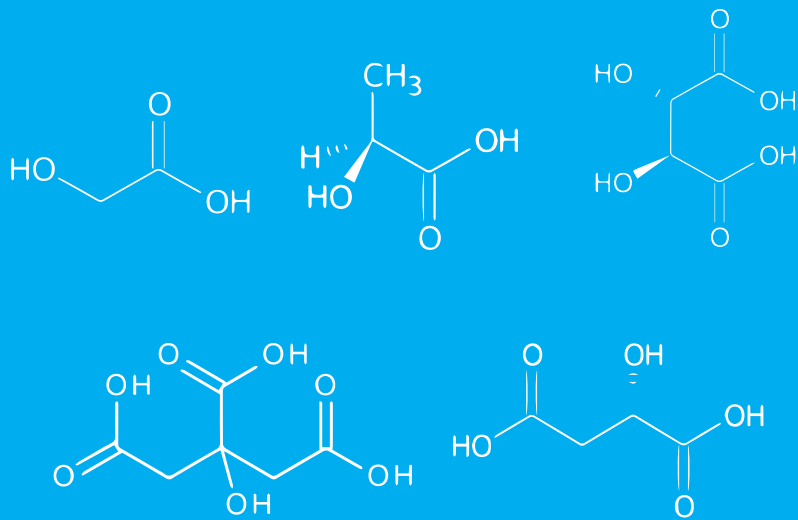
Mono filament

Needle Width	Needle Length	Thread Length
30G	30mm	35mm
29G	40mm	50mm
29G	50mm	70mm
27G	60mm	90mm
25G	90mm	150mm

3D Cog

Needle Width	Needle Length	Thread Length
23G	50 to 100mm	90 to 150mm
22G	50 to 70mm	90 to 100mm
19G	70 to 120mm	100 to 180mm
18G	90 to 150mm	150 to 190mm





Peeling

The first one in monouse wipe

BioPeel

Natural peeling



BioPeel is a concentrate of 5 vegetal extracts:
bilberry, sugar cane, sugar maple, orange and lemon.

BioPeel is an excellent product for a natural and effective exfoliation. Perfect for a deep corneolysis action before any treatment.

Natural source of HA from vegetal extracts pH ~ 4.0
Promotes cells's renewal
Maximum efficiency wit minimum irritation Promotes skin radiance

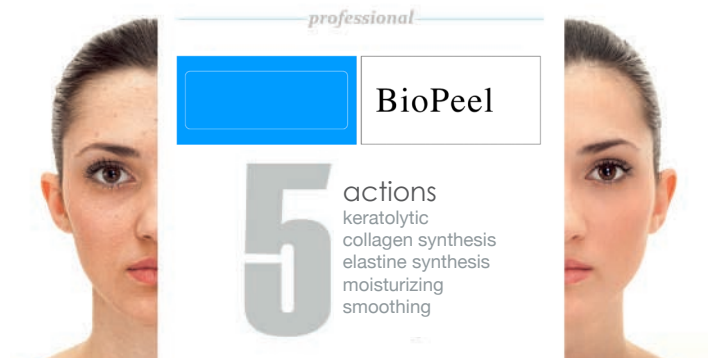
The extracts are mixed in the following percentages:
Lactic Acid 28-32% - High Moisturizing
Glycolic Acid 12-17% - Efficient Keratolytic Effect
Citric Acid 2-6% - Stimulates Collagen Synthesis
Malic Acid 1% max. - Increases Skin Elasticity Tartaric Acid 1% max. – Enhances Skin Firmness

Indications

High corneolysis action.
To be applied before any dermatological treatment: phototherapy, laser, needling, RF, any other cosmetic method

How to use

Rub evenly in circular motions, over the area to be treated,
until the drying of the towel. Do not rinse for the 8-12 h.





Cosmeceuticals

Functional and adjuvant in outpatient treatment

Stop the flush

Chelaskin

The Lactoferrin is a glycoprotein mainly present in breast milk, but is present in many secretions such as tears and saliva with a strong chelating action of the iron.

The Lactoferrin is a chelator endogenous which belongs to the family of transferrins.

The Lactoferrin is able to chelate iron (two atoms) at neutral or alkaline pH and of release at acidic pH.

The three-dimensional structure of lactoferrin, consists of a single polypeptide chain of 692 amino acids, is organized in two globular lobes joined by a alpha-helix.

Each of the two lobes of the protein consists of two domains. The protein is structured in such a way such as to have a single binding site for the iron for each lobe, located in each of the faces internal of intra-domainial space.

The binding properties of lactoferrin are developed through the combined action of 4 residues amino acid identical for each lobe and include, in addition to the ferric ion, a counter ion (normally a CO₃²⁻), synergistic for each Fe³⁺. This set of ligands is chemically and geometrically ideal for a high binding affinity reversible with iron and the presence of a non-protein element (CO₃²⁻) seems to be a necessary condition both for the bond, and for the release of iron.

Mode of action

Main characteristic of Lactoferrin is to have a molecular conformation such as to host within itself two ions iron thus allowing to adjust the transport and absorption, as well as increase its bioavailability.

It is believed that this is the only system for integrating the iron in every cell of the human body and the use of Lactoferrin permitting its introduction in much lower dosages than those used up to now, since it increases



Anti-inflammatory Activities

As regards the ability anti-inflammatory of the Lactoferrin, significant traces have been noticed in the circulation during the inflammatory phase, resulting from activated neutrophils.

This evidence suggests that the Lactoferrin put into circulation acts in such a way as to inhibit the excessive production of cytokines and preventing the excessive recruitment and activation of leukocytes in the inflamed areas.

Indications

Aesthetic Medicine: bruises after filler, mesotherapy, needling, laser, RF, discoloration of sclerosing.

Aesthetic surgery: rhinoplasty, liposuction, blepharoplasty, lifting.

Home indications: dark circle, vascular sign (couperose, teleangectasie, rosacea), dark spot.



*Post-laser
refreshing gel*



MOISTURIZING AND SOOTHING GEL

Gelaskin

Moisturizing and refreshing

In addition to lipids, the skin needs an optimal percentage of water to maintain its softness and freshness. The ability of the skin's stratum corneum to absorb the moisture depends on the moisturizing factors present in the epidermis, called NMF.

The NMF (mainly made from lactate) is easily damaged by the use of soaps, surfactants, UV-A and UV-B rays and various dermatological methods (laser, wax depilation, radiofrequency, etc.).

This is evidenced by the early desquamation of epithelial cells and their loss of flexibility.

Gelaskin with its formula (rich in sodium lactate, sodium PCA, glycine, urea, hyaluronic acid and niacinamide) provides skin lipids and moisture with rapid absorption.

Bisabolol and Aloe protect and heal the skin from the effects of daily stress. They are a naturally occurring active ingredients that accelerates the healing process of skin.

Menthol gives an instant feeling of freshness by carrying out an important tonic and antibacterial action in the application area.

Indications: post laser skin redness, depilation (with wax, laser, electrocoagulation), radio frequency, solar exposure or lamp.



*Available in bottle of 1lt.
or/and of 200ml.*



REDUCES SCARRING AND KELOIDS
NATURAL ACTIVES WITH STRONG EFFECT

Reoil Skin nutrition

A great natural source of vitamin C, rose hip has been used for centuries as a natural remedy in herbal teas, in syrups and tinctures. Vitamin C, or ascorbic acid, is a vitamin indispensable to ensure that the body remains in good health as it not only acts as an antioxidant protecting against free radicals, but also protects against infection, it helps to heal wounds and promotes a good cell growth. However, since ascorbic acid is a water soluble vitamin, it is not produced by the body and must be taken externally. The musk rose berries are thought to be very rich in vitamin C, hence their traditional use in teas and in syrups. However, vitamin C is not the only vitamin the rose hip, and is certainly not the most important! The seed of the rose hip contains a number of other vitamins, antioxidants and fatty acids that make Reoil a truly amazing natural product.

Among the various nutrients that Reoil contains, in addition to vitamin C it is worth mentioning the following: vitamin A. Also known as retinol, it can help combat oily skin, dehydrated skin from sun exposure, expression lines, wrinkles and skin irregularities of the skin in general.

Reoil has been shown to improve the following skin imperfections:

Scars, Stretch Marks, Scars Psoriasis, Scars from eczema, Hyperpigmentation, Dermatitis, Wrinkles and skin lines, Burns, Acne Scars, Scars from chicken pox, Skin damage caused by extreme exposure to the sun, Poor skin elasticity, Dry skin, Hypotonic skin, Premature aging.

Reoil is a fantastic moisturizer for the skin, and in addition does not make it greasy like most of the lotions for dry skin.

Reoil and wrinkles

The way it is mostly used Reoil is like skin moisturizer and anti-wrinkle. As we age, the sebaceous glands decrease in size, and produces more sebum to 25 years than at 50. This condition is exacerbated by possible climatic and environmental conditions such as drought and air pollution. Due to the lack of hydration and sebum, the skin begins to deteriorate. Reoil, with its high absorption power, it penetrates the skin almost instantly to restore the proper balance and hydration necessary.

Generally it is better to prevent aging, why experts recommend starting treatment with Reoil 20s, especially for those who are often exposed to the sun for long periods of time. One application per day will be sufficient. It is important to pay attention to prevention, as the histological changes (non-observable) precede the clinical manifestation (ie the clear and tangible) of at least a decade.

Reoil against stretch marks

Reoil, acting on the skin damage, looks like a good ally also against stretch marks. In fact, it applied daily, tones the areas affected by stretch marks that are also often accompanied by loss of elasticity. In case of stretch marks, the oil must be applied morning and evening, using circular and soft massages. The first results are beginning to be seen after two months of continuous use.

Optic effect



With

Glabridin - Kojic acid
Arbutin - Azelaic acid
Vit. C - Pueraria

DARK SPOT REMOVER

Max White Optic effect

The formula of Max White is rich in active ingredients, present at high concentrations and with strong depigmenting properties, able to contrast the phenomena of both biological and chemical-physical nature that are at the base of the manifestation of these skin imperfections.

What are the key ingredients of MAX WHITE?

Glabridin: It is an isoflavonoid extracted and isolated from the root of *Glycyrrhiza glabra* L. Studies in vitro and in vivo have shown that this phytoestrogen possesses numerous properties: antioxidant, anti-inflammatory, neuroprotective, antiteratogenous, antibacterial and also depigmenting when applied to the skin. The depigmenting activity of Glabridin is due to a multifunctional action on the causes that lead to the manifestation of cutaneous dyschromia.

Vitamin C: Ascorbic Acid, almost ubiquitous molecule in nature, present mainly in citrus and green leafy vegetables, reduces the production of melanin because it is able to reduce o-DOPACHINON to the previous compound, DOPA, interrupting the oxidation process leading to the formation of melanin. In the formula of Max White a more stable form of Vitamin C, Ascorbyl Glucoside has been added. The latter in fact turns out to be more stable to oxidation, thus increasing the performance of the product.

Arbutin: A natural glucoside of Hydroquinone, chemically known as Hydroquinone- β -D-Glucopiranoside, the mechanism of action, however, seems different, as studies on cultures of human melanocytes have suggested that it does not act on synthesis or on expression of the enzyme. Clinical studies have verified that its applications do not give the appearance of side effects, unlike the Hydroquinones.

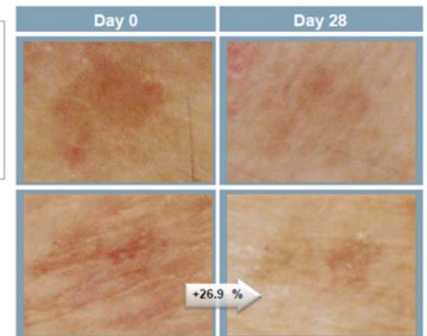
In vivo study on age spots

Skin pictures

Subjects: 15 healthy woman volunteers, age 45 to 76
Application time: Twice a day for 4 weeks
Application zone: On the forearm
Evaluation: Skin pictures
Quantification carried out by image analysis with Image-Pro Analyser software

Image quantification showed that skin luminosity could be increased on age spots.

Achromaxyl ISR biofunctional can visibly help attenuate the appearance of age spots. It may help maintain an even skin tone.



Kojic Acid: inhibits the enzyme tyrosinase, chelating copper in the active site. Clinical studies have shown that the Kojic acid and its esters have depigmenting properties and are considered safe and non-toxic. The inhibitory effect on melanin formation is due both to the inhibiting activity of the transcription factor associated with microphthalmia (MITF), and to the inhibition of the activity of the alpha-melanocyte stimulating hormone (alpha-MSH)

Azelaic acid: The bleaching properties of azelaic acid are due to the competitive tyrosinase inhibitor action.

Pueraria (Kudzu): The root and the flower, used in traditional medicine, have various medicinal properties. Numerous studies have shown the activity of extracts of this plant towards melanogenesis. The activity of suppression of melanogenesis has been confirmed visually by the coloration of Fontana-Masson.

Vitamin A: Retinoic Acid also acts as a depigmenting agent and can produce a lightening effect when applied topically. The mechanism of action, although not fully clarified, is connected on one hand to the increased cell turnover of keratinocytes, thus



Three actions

- ✓ Protects - Hydrates - Soothes
- Aloe - Oat - Hyaluronic Acid - Syn-Ake



VERY HIGH SUN PROTECTION

50+
SPF

Defend Very high sun protection

Defend is a photoprotector suitable for everyday use. Ideal for dry hyper-reactive skin, photodermatitis, photosensitivity due to certain drugs, pigment spots, premature skin aging and immunological alterations. Helps prevent dermatological disorders caused by excess UVB and UVA (SPF 50+) radiation, including solar allergies, stains, elastosis, premature aging and the consequences of the cumulative effect of radiation in the skin.

The tolerability and effectiveness of Defend is tested under dermatological control.

Defend is a multifunctional product. Besides the presence of effective sunscreens against UVB and UVA rays, the formula has been enriched with precious active ingredients, suitable to guarantee: Protection against UV rays, Moisturization and Soothing.

ALOE VERA - The renowned Aloe Vera or Aloe barbadensis has been scientifically tested for all forms of burn, whether radiant, thermal or solar. It has also been shown to have a prophylactic effect when used before, during and after these skin-damaging events. Many of the benefits of AV can be attributed to the polysaccharides contained in the leaf gel. However, many other natural chemical constituents of Aloe Vera extract have been associated with its beneficial health effects: amino acids, anthraquinones, enzymes, organic and inorganic compounds, lipids, carbohydrates, lignin, salicylic acid, saponins, sterols and vitamins (B1, B2, B6, C, β -carotene, choline, folic acid and α -tocopherol).

SYN®-AKE is based on a patented mechanism. It mimics the essential amino acid sequence of the Waglerin-1 functionality. SYN®-AKE's safety and activity has been thoroughly tested. Its effect focuses on an immediate and lasting relaxation of mimicry wrinkles by blocking the neuronal transmission on the

Nicotinic Acetylcholin receptor. The peptide is an antagonist of the muscular nicotinic acetylcholine membrane's receptor (mnAChR). As the muscular nicotinic Ach receptors are blocked, the ion channel remains closed. There is no uptake of Na^+ and the muscle cells stay relaxed. The transmission of nerve impulses to the muscles is inhibited and facial muscles are relaxed.

Hyaluronic acid, and, more generally, Mucopolysaccharides, are among the main constituents of connective tissue structures. The very low molecular weight (5-10 kDA) of hyaluronic acid present in DEFEND, improves intradermal penetration, also constituting a raw material for the formation of medium molecular weight hyaluronic acid. This type of hyaluronic acid is particularly suitable for retaining water, both in connective tissue and in the fundamental layer of the dermis (and therefore responsible for deep hydration), and in the upper layers of the skin, reducing transepidermal water loss (TEWL).

Colloidal oatmeal has been used for thousands of years to treat dermatological diseases. Colloidal oatmeal is appreciated for its moisturizing, purifying, antioxidant and anti-inflammatory properties, which are conferred by its chemical heterogeneity. It has been shown that oatmeal extract inhibits the activity of the nuclear factor Kappa B (NF-kappa B) in keratinocytes and the release of proinflammatory histamine of cytokines. It also modulates the arachidonic acid, the cytosolic phospholipase A2 and the tumor necrosis factor-alpha (TNF-alpha). Colloidal oatmeal has proven to be a safe and effective ingredient in a variety of personal care products. Contains a variety of active components including polysaccharides, proteins, lipids, saponins, enzymes, flavonoids, vitamins and avenantramides.



THE ULTIMATE
COMPLEX



TRICOCURE
Hair energy boost

V-EGF - Kopexil - Serenoa
Capixyl - Beta-Sitosterol

Anti DHT lotion

Tricocure Anti DHT Lotion

TRICOCURE is the most revolutionary and complete formula to reduce the main hair loss causes. The formula of Tricocure is enriched with numerous active ingredients: V-EGF (vascular regrowth factor), Kopexil (cutaneous microcirculation enhancer), Serenoa repens extract, Capixyl, Beta-sitosterol, (5-alpha reductase inhibitors) and a pool of nutrients and restructuring products such as Panthenol, Biotin, Folic Acid, Ginseng Extract, silk proteins are the TRICOCURE core.

According to bibliographic evidence in the trichological field, these substances guarantee a synergistic action of proven efficacy.

Promoter of skin microcirculation, reduce the oxidative stress extending the hair growth phase (anagen), providing the essential nutrients to help the natural process of regrowth to give new vitality, energy and volume to the hair.

How TRICOCURE does it work?

The topical application of 3 ml twice a day with the practical applicator allows to bring nutrients and active substances directly on the scalp, thus managing to easily reach the hair follicle.

What are the key ingredients of TRICOCURE?

TRICOCURE combines natural vitamins, minerals, DHT inhibitors and compounds that promote the growth of thick and healthy hair. Kopexil: In both men and women hair loss is connected to the deterioration of the roots.

Kopexil increases the volume of hair in the growth stage by working on the deep structure of the roots. Kopexil (2,4 Diamino Pyridine – 3 oxide) (2,4 DPO) is an altered form of Minoxidil without the side effects.

CG-VEGF: The growth factor VEGF, thanks to its ability to stimulate angiogenesis and the consequent supply of nutrients at the base of the follicle, actively stimulates hair growth.

Saw Palmetto extract (Serenoa Repens): acts by interrupting the hormonal signals and therefore reducing the absorption by the hair follicles of a harmful chemical called dihydrotestosterone (DHT). DHT is also responsible for reducing and thinning the hair follicle. Normally this is called miniaturization, after which the hair ends up falling. This is why DHT is responsible for about 95% of hair loss. The men or women who lose most hair are those genetically predisposed to produce more DHT than others.

Beta-sitosterol: beta-sitosterol is a natural plant extract that is used to stop hair loss in men and women. It has inhibitory properties against androgens, which allows targeting of hormones responsible for male and female pattern baldness.

Capixyl: Capixyl is the blend of two ingredients with a strong anti-fall activity. Biochanin A extracted from Red clover is a powerful isoflavone. Biochanin A is an effective inhibitor of 5- α -reductase (type I & II) activity, thus modulating the conversion of testosterone to DHT in androgenic alopecia. Acetyl tetrapeptide-3 is a peptide derived from a signal peptide which stimulates tissue remodeling. The peptide has a direct effect on hair follicle. The remodeling signal will increase the size of hair follicle for better hair anchoring and vitality.

Biotin (Vitamin B7): essential not only for the growth of new hair. **Niacin** (Vitamin B3): since niacin has the effect of dilating vessels and capillaries, it is thought that this increases the flow of blood to the scalp and stimulates their growth. **Pyridine** (Vitamin B6): vitamin B6 is thought to prevent hair loss and help create melanin, the pigment that gives color to the hair.

Pantothenic acid (Vitamin B5): prevents graying and hair loss.

American ginseng root extract: increases stimulation and improves circulation.



anedol®



Antibacterial action



DESENSITIZING FOR TOPICAL USE

Anedol

Reduces the pain of needle puncture

Anedol® is a skin numbing topical gel based on Eugenol, extracted especially from clove oil with antiseptic and antibacterial properties but the most important anaesthetic properties.

Anedol® is used for topical “anesthesia” before any aesthetic treatment, such as filler, mesotherapy, laser, needling, and any other treatment that can cause pain to the patient. Its formulation allows a local topical sensory shock with immediate effect that lasts around 10 minutes, time that enables to make the treatment.

Its rapid effect, when needed, it can be applied again with immediate effect so the operator is able to continue the treatment without any work-break.

How to use: Using the airless dosing pump, dispense one dose, (in relation to the extension of the area to be treated) on slightly damp skin. Massage lightly. After two minutes apply another dose to increase the effect. Do not rinse until the end of treatment.



*Available in airless of 50ml.
or/and in bottle of 200ml.*



Needle

Hypodermic and flexible range



SOFT INJECTIONS IN MESOTHERAPY

10

Needletech Hypodermic needles

Needletech needles are realized under an accurate selection of the raw materials, keeping a particular attention during the packaging phase, in order to avoid eventual blunts of the needles.

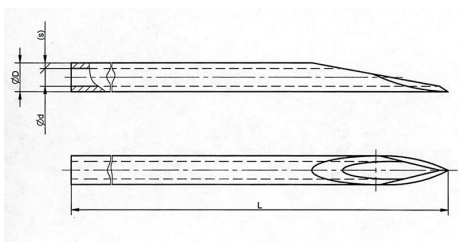
An exclusive process of lubrication of the cannula of the needle allows a fluid and painless penetration into the skin.

The accurate sharpening of the needles minimizes the pain associated with the treatment.

The ultra thin diameters (0.3 and 0.23 mm) make this product excellent for mesotherapy, filler, botulinum, sclerosant and collagen treatments.

Box of 100pcs. In EO sterile single use blister.

Cone	Size	Lenght
Luer	33G	4mm
Luer	32G	8mm
Luer	32G	4mm
Luer	31G	13mm
Luer	31G	6mm
Luer	31G	4mm
Luer	30G	13mm
Luer	27G	13mm
Luer	26G	13mm
Luer	18G	90mm





Pain, Bleeding, Bruising, Edema
Inflammation, Local Anesthesia



innovative

WAY TO PERFORM THE FACIAL FILLERS INJECTIONS

Needleflex

Flexible cannula blunt tip and side hole

The balance between flexibility and rigidity. This flexibility allows the practitioner to adapt and control his gesture to avoid pain and without damaging the dermis or underlying tissues.

Needleflex glides beneath the skin without damaging it.

Broad series of cannulas
Nine different sizes carefully selected to match all needs.

Adapted to every medical application
One or more sizes for each area, direction of injection and depth.

Available for all fillers and mesococktail on the market
Lengths, outside diameters and internal calibers suitable to any mesococktail and filler range.

The best proportion between quality and price
Perfect flexibility and robustness of the stainless tube and plastic hub.

Full medical safety

Minimal traumatism on tissues thanks to cannula's blunt tip.

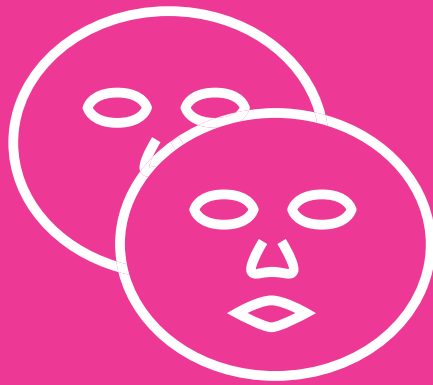
Needleflex permits to reduce the number of injection sites, which allows less painful to the patient over a wider area.

Thanks to their flexibility and their blunt type, micro cannulas Needleflex reduce the risk of bruises and inflammatory reactions.

Cone	Size	Lenght
Luer	30G	25mm
Luer	27G	38mm
Luer	27G	50mm
Luer	25G	38mm
Luer	25G	50mm
Luer	22G	50mm
Luer	22G	100mm
Luer	18G	50mm
Luer	18G	100mm

One box contains 100pcs





Masks

Patch Hydrogel face mask



ALL OF THEM ARE MADE IN ORDER TO ASSURE AN EFFECTIVE OSMOTIC PROCESS

mesotech

Masks

Patch Hydrogel Face Mask

Mesotech's Masks Range are made up of a double layer. The first layer is composed by a thick cellulose layer, while the second layer is in hydrogel.

Both of them are made in order to assure an effective osmotic process which allows a high transfer efficiency of active ingredients (pharmaceutical grade) present in the hydrogel film.

In order to create the ideal conditions able to stimulate the osmotic process, the skin needs an accurate compression through a thick compound that must be at the same time flexible and elastic in order to fit exactly the shape of the area to be treated (for this reason tnt is not an idoneous material to stimulate the osmotic process).

Botophaset Mask

Botophase Mask reduces the depth of facial wrinkles caused by contraction of muscles from facial expressions, especially around the eyes, mouth and forehead. It detoxifies the skin and has high anti-oxidants properties (Vitamins A, C, E). Due to the high percentage of hyaluronic acid, it restores the hydrolipidic level.



Biobalance Mask

Hydrogel face masks, easy and fast use (pre-cut). It's 3D reticular structures ensures hours of maximum adhesion to the skin. They are dampened with active ingredients specially selected for treatment of different types of skin. Elasticity, moisturizing the skin and do not cause irritation.





Supplements

The best raw material to make goal



The Italian Pharmaceutical Research Laboratories.
H24 nutrition and protection.



24

ACTIVES FOR HAIR RENAISSANCE

Box of: 60 tablets of 1.2g - Total Net Weight 72g

HS Anti DHT

A nutritional supplement containing extracts of Serenoa, Nettle, American Ginseng, Ginkgo, Taurine, B vitamins and minerals.

Ingredients: Microcrystalline cellulose, gelatin, calcium phosphate bi-base, Pine (*Pinus sylvestris* L.) bark dry extract titrated at 95% in protoantocyanidine, Astaxanthin derived from alga *Haematococcus pluvialis*; **Antiplatelet agents:** vegetable magnesium stearate, colloidal silica.

Indications: HS is a supplement that can contribute to the maintenance of physiological structure of hair (biotin) and their pigmentation (copper). The extract of Ginkgo plays an antioxidant action whereas vitamin B9 and iodine contribute to the physiologic energy metabolism.

Information: the use of vitamin B complex has long been known for facilitating the different metabolic activities. In particular in the HS supplement, the use of Biotin contributes to the maintenance of physiological structure of hair while vitamin B9 intervenes in the process of cell division. In combination with these, vitamins B1 and B5 contribute to the physiologic energy metabolism.

Among the minerals used by the integrator HS there is the Copper which contributes to the pigmentation of the hair and the Iodine which is involved in energy metabolism. The associations of plant extracts developed and used in the HS Supplement play an effective antioxidant action conferred by titrated extracts of Ginkgo and Tonic, American Ginseng Extract, useful in case of stress.

Saw palmetto

Saw palmetto extract comes from berries of the palm tree Saw palmetto (*Serenoa repens*) which is indigenous to the Atlantic Southeast coast of North America. Studies have shown that Saw palmetto is an effective anti-androgen. Firstly it lowers levels of DHT in the body by blocking 5 alpha-reductase. Secondly Saw Palmetto blocks receptor sites on cell membranes required for cells to absorb DHT. Studies have been performed on the use of Saw palmetto in the treatment of benign prostatic disease which similar to Androgenetic Alopecia also depends on the production of dihydrotestosterone(DHT). All of the studies that have been performed to date show that Saw palmetto is an effective anti-androgen and has shown conclusively to be effective in the treatment of benign prostate disease. One may assume from this that since Saw palmetto is an effective anti-androgen. More and more people around the globe are starting to use Saw palmetto in the treatment of Androgenetic alopecia.

Beta-sitosterols

Beta-sitosterols appear to inhibit the action of the enzyme 5-alpha- reductase, which converts testosterone into dHt. It is one of the main contributing factors to alopecia.

FAST UNDENIABLE REDUCTION 15.6%
AFTER 12 WEEKS

5

actions

Thermogenesis

Lipolysis

Diuresis

Reduced absorption of sugars

Reactivating metabolism



Celludren

Weight loss drink

Glycemic Index

It 'a benchmark by which we measure the speed with which foods cause increase blood glucose, a high index is a symptom of a high glycemic response associated with increased risk of obesity.

Thermogenesis

It 'a particular metabolic process which consists in the production of heat by the organism especially in muscle and adipose tissue.

The magnitude of thermogenesis varies from subject to subject, because it is closely linked to factors genetic, which determine the amount of "tissue brown adipose." Undeniable reduction in the percentage of fat of 5.53% after 4 weeks of use, and 15.6% after 12 weeks. The search concludes that Celludren promotes both the loss of weight and of fat fat.

Polyphenols, Sinefrine and Caffeine To Promote And Thermogenesis Lipolysis

It has long been known synergy between caffeine and epigallocatechin of Green Tea, their joint activity promotes and implements lipolysis and thermogenesis, favoring the loss of fat in excess.

Synephrine (also called p-synephrine or phenylephrine, from which it differs chemically due to the position of an alcohol group.) Is a plant extract present in the fruits of Citrus Aurantium, a substance similar to ephedrine. Synephrine performs an action on the body fats by activating lipolysis (the breakdown and consumption of fats) and promoting thermogenesis (an increase of calories burned by the body). This mixture has great anorectic properties, and it can reduce appetite.

The green coffee is characterized by a high content of chlorogenic acid, a powerful antioxidant that can reduce the absorption of sugars from the intestine and at the same time to speed up the metabolism by accelerating the process by which our body burns stored fat.

Hieracium pilosella is effective in water retention due to its diuretic effect which translates into a direct stimulation of the kidneys to remove waste products of metabolism (sodium, chlorine, uric acid and nitrogenous waste).

Thanks to this action, draining the pilosella is useful in the treatment of unsightly fat deposits and liquid and promotes the elimination of toxins, aids kidney function, the mobilization of excess fluids and elimination of salts trapped in the tissues. Furthermore, the diuretic action, through the increase in urinary flow, promotes the control of other diseases such as mild hypertension, in which a reduction of body fluids results in a reduction of the blood volume, and then the vascular pressure, but also the renal calculi.



SUPPORT MUSCLE DEFINITION
REDUCING CUTANEOUS
FAT DEPOSITS



YOUR DIET PERSONAL TRAINER

Idealweight

Strong oral weight lose supplement

Forskolin is an extract of the 'Ayurvedic herb Coleus forskohlii. It re-sensitizes the cell receptors by activating the enzyme adenylate cyclase and increasing the amount of AMP (adenosine monophosphate) cyclic in cells. Cyclic AMP is a carrier of essential signals because the cells respond correctly to hormonal stimulation. Cyclic AMP is necessary for intracellular transmission in the hypothalamic / pituitary axis and for the feedback control of hormone production. Restoring the sensitivity of the hypothalamus and peripheral receptors allows agile hormones and bioenergetic factors to work with increased efficiency. It is not enough to restore the correct hormone levels in the body, it is also necessary that the hormone receptors are sensitized and react effectively to stimuli.

Forskolin also allows to lower the intraocular blood pressure: several studies have shown its efficacy in the treatment of glaucoma. Other beneficial effects have also been demonstrated in the treatment of hypertension, asthma, eczema, psoriasis and angina pectoris.

Forskolin stimulates digestive enzymes and improves the absorption of nutrients in the gut. Recent studies also show a stimulation of thyroid function, an increase in the basal metabolic rate, a significant increase in lipolysis (which is not surprising because it is regulated by cyclic AMP) and the same decrease in the synthesis of fatty tissue. For that forskolin has become one of the "fat burners" most widely used after ephedra has been removed from the market.

Forskolin is a vasodilator. The blood flow is an important aspect and often neglected in fat loss, as the blood flow to adipose tissues, particularly areas of stubborn fat, it is vital for the transport of fatty acids in the areas where they can be burned.

Polyphenols, sinefrine and caffeine to promote and thermogenesis lipolysis

It has long been known synergy between caffeine and epigallocatechin of Green Tea, their joint activity promotes and implements lipolysis and thermogenesis, favoring the loss of fat in excess.

Synephrine (also called p-synephrine or phenylephrine, from which it differs chemically due to the position of an alcohol group.) Is a plant extract present in the fruits of Citrus Aurantium, a substance similar to ephedrine. Synephrine performs an action on the body fats by activating lipolysis (the breakdown and consumption of fats) and promoting thermogenesis (an increase of calories burned by the body). This mixture has great anorectic properties, and it can reduce appetite.

The green coffee is characterized by a high content of chlorogenic acid, a powerful antioxidant that can reduce the absorption of sugars from the intestine and at the same time to speed up the metabolism by accelerating the process by which our body burns stored fat.



Needling

Mechanical skin biostimulation



NeedleRoll

The Skin Needling is a technique of Regenerative Dermatology. It can be safely performed on all skin colours and types. There is no risk of postinflammatory hyperpigmentation. This is the distinguishing safety feature between Skin Needling and other invasive procedures that are used to treat deep lines and depressed scars. The principle on which it is based is very simple: the normal healing response begins the moment of tissue injury. Blood components spill into the injury site, causing platelets to come into contact with extracellular matrix.

This contact triggers platelets to release clotting factors, essential growth factors and cytokines, once the injury site is cleaned, fibroblasts migrate into the injury site and start to produce and deposit new ECM. The new collagen matrix then becomes crosslinked and organised during the final remodelling phase, which can continue for up to 12 months after the injury occurs.

Skin Needling with a skin roller produces hundreds of tiny dermal injuries. Each dermal injury triggers the normal healing response within the skin and successive treatments build new collagen progressively and progressively fill in depressed scars and deep lines.

Length of the pins and practical application

With pins of 0.5 mm

- Generic regenerative facial stimulus
- Reduce the signs of photoaging
- Reduction of facial lines (soft wrinkles)

With pins from 1 mm

- Generic regenerative facial stimulus
- Reduction of wrinkles
- Reduction of stretch marks
- Reduction of abnormal pigmentation
- Reduction of scars
- Reduction of porosity
- Brightness and Contrast's Adjustment





Needleroll540 heads

Sterile and single use heads, composed by 540 micro-needles in stainless steel.

The Needleroll540 head, with its 540 microneedles, allows to cover a greater area of penetration in less time and ability to generate 1.000 micro-channels per square cm in 10 minutes, substantially increasing the effectiveness of the procedure.




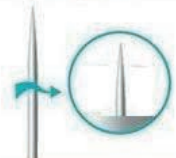
Stainless steel has been scientifically proven to be the gold standard for tools used for skin penetration.

The heads Needling Recharge, thanks to the new shape of the 200 microneedles in titanium, allows to reduce pain and discomfort of the procedure, compared to the standard dermaroller having round shape needles.

Both Needling Recharges and Needleroll540 heads can be used with Motion device or with the apposite Needle Roll handle. Needling Recharges have the same angle of incidence of hypodermic needles, while Needleroll540 have a diamond shape.

Protective cover gives you a 100% safety against probable contagions.

Mesotech has realized this single use range in order to reduce risks of infections due to the re-use of a same needling roller. All for the respect of a correct professional ethic.

Comparing	Needle roll	Head needling
Transversal roller		
Transversal tip		

Size: 0.3mm, 0.5mm, 1mm, 1.5mm, 2mm.

Motion

Ultimate and first skin roller with tank and monouse needling recharges

The Motion Roller has been designed and manufactured to perform the skin needling of last generation.

It is the ultimate and first skin needling device to dispose of a built-in seat for nebulizer and pneumatic atomizer integrated. High penetration efficiency of the active ingredients thanks to the atomization of the lotion in very small particles.

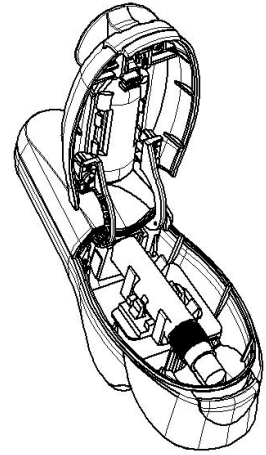
The stratum corneum skin forms a barrier to the penetration in depth in the dermis of the creams applied to the skin; only small amounts of product are able to pass under it and the stratum corneum dry constitutes an additional obstacle to the dermal penetration.

Generally the cosmetic needling is useful exactly to improve the penetration of the cutaneous barrier.

In this regard is important to talk about Prothrombin, also known as coagulation factor II.

Injury to a blood vessel determines the rapid conversion of prothrombin (factor II) into thrombin (factor IIa), which in turn converts fibrinogen into fibrin; is thus produced fiber armor which participates in the formation the clot.

Under normal conditions, the prothrombin time varies roughly from 11 to 13 seconds, this means that after treatment of needling, if we will apply a product (as required by cosmetics needling protocols) we will have no results because “the input channel”, which was opened by the passage of microneedles, will be already close.



FEATURES

ADVANTAGES

Device in Plastic - BAYBLEND®	Allows ergonomic handling during the treatment.
Sterile and monouse Head Needling recharge (Needle Roll)	200 or 540 micro-needles in titanium, (0.2, 0.5, 1, 1.5, 2mm) to obtain always assured and efficient results. The needle have the same incidence angle of hypodermic needles.
Head Needling Protective Cover	No risk to get pricked accidentally.
Pneumatic Atomizer	2 actions in 1, means time savings. The product can be applied while performing the treatment.
Factual Efficiency of the Active Ingredient	The product is in sterile and matt nebulizers and no risk to oxidize because of external agents' exposure.
Global Patent	No way that surrogate products get available on the market, you can offer a professional session.



Available in black or white version

Suitable for face and body treatment. Snip adapter for 3mL or 6mL nebulizers.

The main feature which diversificates the Motion Roller from all the others tools for needling is that Motion makes needling effective within PROTHOMBINE TIME, performing 2 actions in 1: Motion Roller is the unique device for needling that can spray product (mesorecharge: professional mesococktails in sterile nebulizers) while performing the needling. It can be quickly perform two actions at the same time being certain of applying a sterile product and unoxidized.

Moreover, once opened the pores of the skin, after the passage of the needles, it will be easier for them to absorb the product spayed, because it will be atomized in small particles, in order to obtain a high transfer efficiency.

Overplast

From the traditional Italian manufacturing

Since 1920 the know-how, experience and creativity in the manufacture of compression garments and corsetry.

Accuracy in the details, tissue quality, technical performance in line with the growing surgical requirements. Overplast successfully finalizes all types of surgeries: facelift, tummy tuck, liposuction, breast augmentation, otoplasty.

The Overplast sheaths ensure a constant and uniform skin compression throughout the post-operative course, offering a comfortable fit for the patient. The use of advanced fabrics give the patient a feeling of well-being, protection and lightness. First choice for the excellence of Italian cosmetic surgery.

Modern medicine uses compression therapies for the following reasons

- To minimize swelling, bruises and the occurrence of keloid scars.
- To reduce the risk of infection.
- To shape the contours and stabilize the implants.
- To reduce pain.
- To speed up the healing process.

Benefits

- Defined ductility and elasticity
- Maintain a stable microclimate environment
- Antibacterial and hypoallergenic effect
- Eliminate the occurrence of unpleasant odor
- Microfibers take excess moisture away from the body
- Light and pleasant to the touch, making long-term wear easier
- Distinctive texture constantly "massages" scars and thus speeds their healing
- Latex-free
- Flat seams do not put strain on the operated parts





Mesotech is an innovative company, specialized in providing skin care and beauty solutions from the conception to the manufacturing of products and devices for the aesthetic medical field.

Customer satisfaction and quality are the main priorities for our staff.

We develop our range relying on an ongoing dialogue with our customers.

Our Mission

Development of new products from original ideas to a deep research. Original formulations where unique ingredients are selected to restore and correct blemishes and cutaneous



Headquarter and showroom
Mesotech Srl
Via Mazzini, 52
80022-Italy
www.mesotech.it

Distributor Scandinavia and Germany
Mesotech Scandinavia and Germany
Juelsmindevej 57
DK-7120 Vejle, Denmark
www.mesotech.dk